

Bassoon 1

Raising a Tempest

for orchestra

Allegro

Charlie Barber

♩ = 96

A

p

5

p *cresc.*

9 **B**

mf

17 **C**

f *p* *cresc.*

22 **D**

mp *mf* *cresc.* *sf* *f*

26

f *ff*

32 **E**

p *mp* *mf* *p* *mp* *mf*

36

mp *mf* *f* *mp* *mf* *f*

40 **F**

The musical score for Bassoon 1, titled "Raising a Tempest" for orchestra by Charlie Barber, is in the key of B-flat major (one flat) and 2/4 time. The tempo is marked "Allegro" with a metronome indication of 96 beats per minute. The score is divided into six sections, labeled A through F, with measure numbers 1 through 40. Section A (measures 1-4) begins with a piano (*p*) dynamic. Section B (measures 5-8) includes a piano (*p*) dynamic and a crescendo (*cresc.*) marking. Section C (measures 9-16) features a mezzo-forte (*mf*) dynamic. Section D (measures 17-25) includes dynamics of *f*, *p*, *cresc.*, *sf*, and *f*. Section E (measures 26-35) includes dynamics of *f*, *ff*, *p*, *mp*, *mf*, and *f*. Section F (measures 36-40) includes dynamics of *mp*, *mf*, *f*, *mp*, *mf*, and *f*. The score includes various articulation marks such as slurs, accents, and breath marks.

Bassoon 1

2

Raising a Tempest - Charlie Barber

Bassoon 1

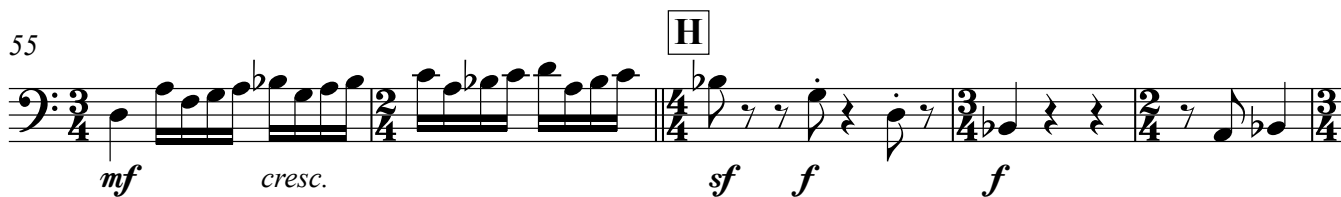
45



51



55



60



65



69



73



77



